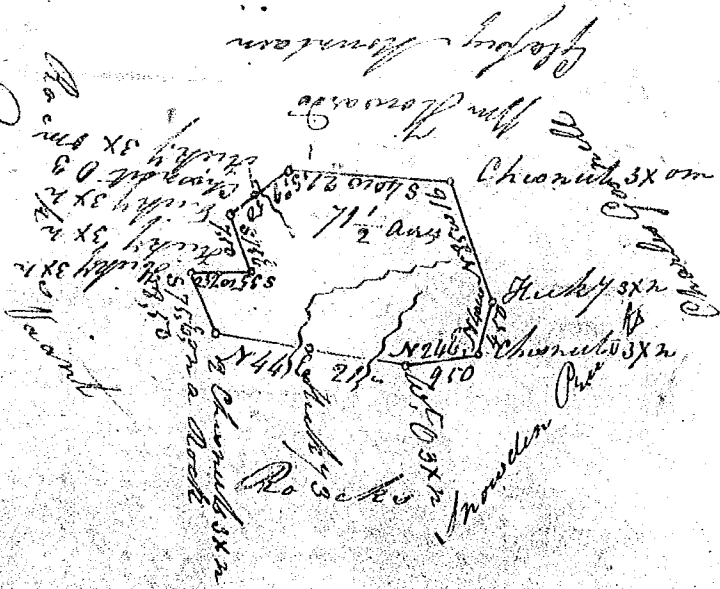


Jacob Belton & Charles
 Wm. Pruitt

(158)



Laid down by a scale of
 Twenty Chb for 1 inch

South Carolina

Pursuant to a warrant from
 John Young, Commissioner of Locations in the Dis-
 trict of Greenville dated the 8th day of Sept^r 1878,
 I have admeasured and laid out unto Elisha C.
 Pruitt, a tract of Land containing twenty one
 acres and half acre, situate in said District
 on the branches of Middle Sugar River, Bounded
 by lines running N W by lands belonging to
 Snowden Pruitt and Charles Gosnell, N E
 by lands surveyed for Wm Howard, and, on all
 other sides by vacant land, and hath such
 foran and markers as the above Plat repre-
 sents

Surveyed the 22nd day of Sept^r 1878

Wiley J. Brown D.S.

Recorded the 5th day Nov^r 1878

John Young, C. Loc^r

Delivered
 J. Alman